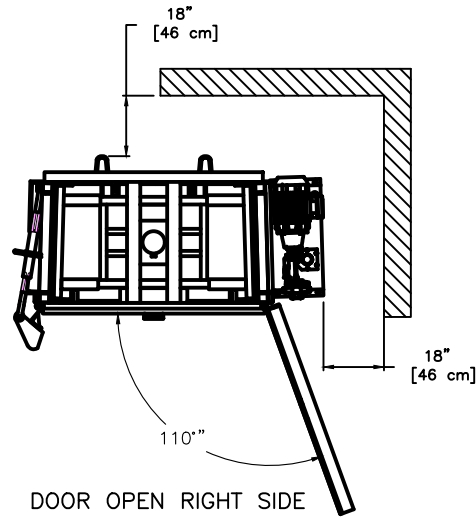


TITLE: 3600HDLP BALER DOOR HINGED RIGHT SIDE



DOOR OPEN RIGHT SIDE

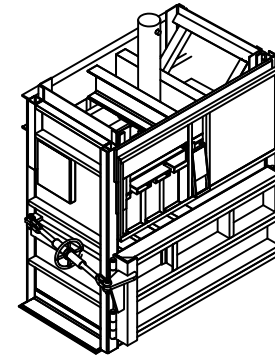


CONTROL BOX
SCALE = 4X

ALL DIMENSION AND SPECIFICATIONS ARE FOR REFERENCE ONLY, ACTUAL DIMENSIONS AND PERFORMANCE CHARACTERISTICS MAY VARY.

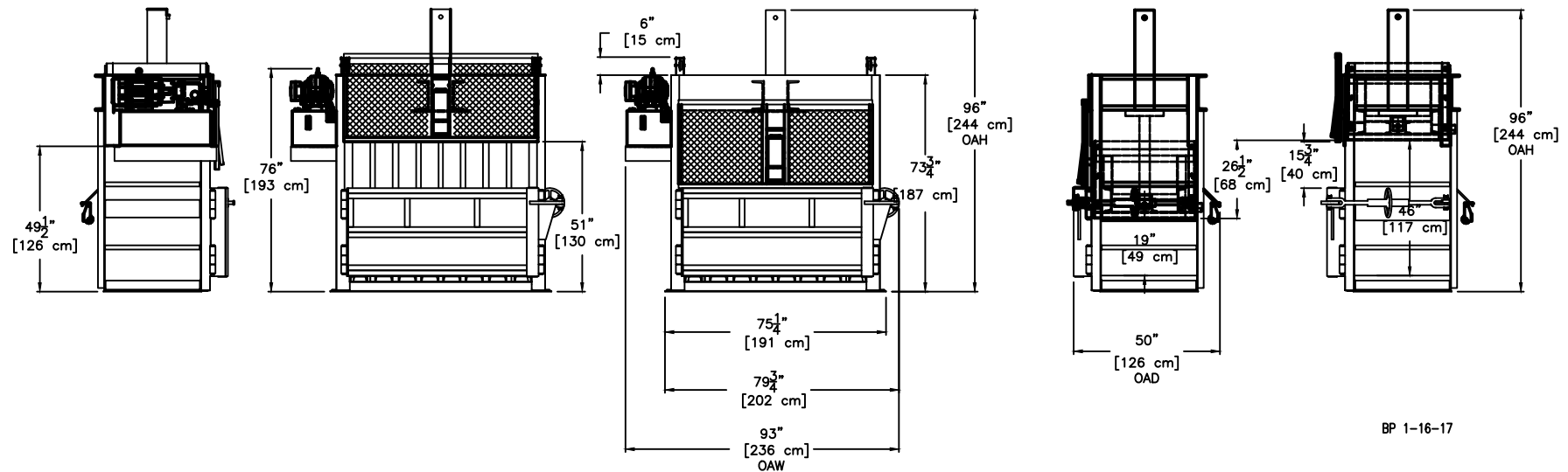
SPECIFICATIONS

| | | |
|--------------------|--------------------------------|--------------------|
| BALE WEIGHT | 600 - 800 LBS OCC | [272- 363 Kg] |
| BALE SIZE | 60" WIDE X 36" DEEP X 30" TALL | [152 X 91 X 76 cm] |
| FEED OPENING | 60" X 15 3/4" | [152 X 40 cm] |
| PLATEN FORCE | | |
| WORKING | 67,858 LBS | [301,847 N] |
| RELIEF | 76,341 LBS | [339,582 N] |
| SYSTEM PRESSURE | | |
| WORKING | 2,400 PSI | [16,547 KPa] |
| RELIEF | 2,700 PSI | [18,616 KPa] |
| RAM PRESSURE | | |
| NOM | 32.7 PSI | [225 KPa] |
| MAX | 36.7 PSI | [253 KPa] |
| AVERAGE CYCLE TIME | 32 SEC. | |
| CYLINDER BORE | 6" | [15.24 cm] |
| CYLINDER STROKE | 27" | [69 cm] |
| CYLINDER ROD | 3 1/2" | [9 cm] |
| MOTOR | 10 HP (208/230/460V-3 PHASE) | [7.45 Kw] |
| PUMP | 10.5 GPM | [39.75 L/m] |
| SHIP WEIGHT | 4,720 LBS | [2,141 Kg] |



ISOMETRIC VIEW
NO POWER UNIT

ALL DIMENSION AND SPECIFICATIONS ARE FOR REFERENCE ONLY, ACTUAL DIMENSIONS AND PERFORMANCE CHARACTERISTICS MAY VARY.



BP 1-16-17

DWG. NO: AB403041R1

PTR BALER & COMPACTOR